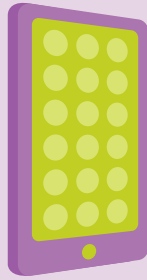


# Your guide to raising £10000

**£250 - £500**



Increase your reach by utilizing social media. Distribute your fundraising link across all of your social media platforms, including Facebook, Instagram, LinkedIn, or any other channel you have.

**1**

**2**

**£100 - £250**

Are you a member of a walking group, knitting group, or book group? Or is your partner or family a member of such a group? Join in and ask them to take 5 minutes during the group meeting to share what you are currently doing!



**£150 - £400**

Have a dress down Friday where everyone donates to wear what they want. Even better, coworkers can donate to throw a cream pie in the boss's face! If that's too extreme, offer car washing at work where colleagues can donate to get their cars washed while at the office.

**3**

**4**

**£200 - £400**

Run a good old fashioned raffle at the office by asking colleagues and local businesses to donate prizes. It's a great way to involve everyone in the office.



**£200 - £400**

Will your company consider offering a day of annual leave to give away? Everyone in the workplace could contribute £2 (or more) for a chance to win a full day off!

**5**

**6**

**Endless**

Does your company offer match funding? Companies like banks or building societies typically do, but it doesn't hurt to ask any company. If you raise £500, they may match it, doubling your total to £1000!

