

What we do

St Gemma's is for people who have life threatening illnesses with difficult symptoms. Care is based on a simple idea – that the person is more than the illness. Each of us – sick or well – has unique physical, emotional, social and spiritual needs. St Gemma's tries to respond to these needs in ways which place the highest value on respect, choice and empowerment.

Care is offered to patients and their carers in the Hospice's In-Patient Unit, through the St Gemma's community team supporting patients and families at home and in care homes, and via a range of Out-Patient clinics.

We work closely with other care providers in the city to ensure a seamless service for people across Leeds.

The services provided by St Gemma's Hospice are completely free of charge to patients, families and carers, but are not free to provide.

The majority of the Hospice's annual running costs must be raised from donations and fundraising initiatives. We simply would not be able to continue caring for people with life threatening illnesses without the valuable and on-going support of the community. We are extremely grateful to all those who make donations, take part in fundraising events, leave a gift in their Will or help the Hospice in any way to continue its caring work.

“St Gemma's is such an important part of our community...”

This is just a brief overview of some of our work this year. We couldn't list everything, but thank you to everyone who has contributed in any way.



“I love supporting a local charity that makes such an impact to so many...”



For more details about the work of St Gemma's Hospice, or how you can support us, please visit: www.st-gemma.co.uk or call 0113 218 5555.



St Gemma's Hospice,
329 Harrogate Rd,
Leeds, LS17 6QD
0113 218 5500
www.st-gemma.co.uk

Registered Charity 1015941
Company Limited by Guarantee
Registered in England 2773867
Registered Office as opposite



St Gemma's Hospice The Year in Review

2021/22



The Year in Numbers

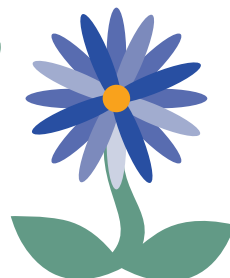
1,330
local people
were referred to
St Gemma's care
for the **first time**



100%
of bereaved
families felt their
loved one had been cared
for with **dignity**



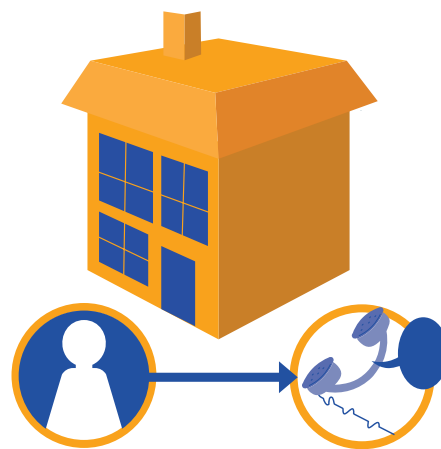
878 Volunteers contributed
62,692
hours across key areas,
including **bereavement support**,
spiritual care and **gardening**



Our team
of **specialist
community
nurses and
doctors** made

21,448

contacts with patients



You helped to raise

£13.4m

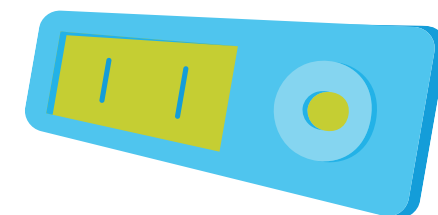
so we could continue
providing vital services
and investing in raising
money for the next year

We ranked **37th** in the
**Inclusive Top 50
UK Employers List**,
officially recognising
our continued commitment
**to workplace diversity,
equality and inclusion**



There
were
416

admissions onto the
Hospice's In-Patient Unit.
We cared for patients
with Covid-19 and facilitated
patient visiting



571,816

customers visited
our chain of shops
and bought

1,219,224 items,

helping to raise over

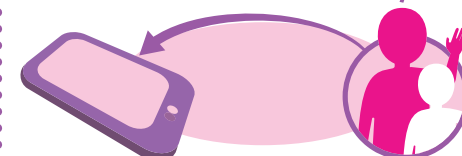
£1.5 million

towards patient care

We supported adults
and children through
bereavement, making

1,202

contacts in the year



We trained

988

external healthcare
professionals,
mostly online

“
It is only possible thanks to you...
”

Thanks to you, we were able to provide all of our
expert services completely free of charge
to patients and their families