

What we do



“ You truly looked after the whole family, not just my brother. ”

St Gemma's is for people who have life threatening illnesses with difficult symptoms. Care is based on a simple idea – that the person is more than the illness. Each of us – sick or well – has unique physical, emotional, social and spiritual needs. St Gemma's tries to respond to these needs in ways which place the highest value on respect, choice and empowerment.

Care is offered to patients and their carers in the Hospice's In-Patient Unit, through the St Gemma's community team supporting patients and families at home and in care homes, and via a range of Out-Patient clinics.

We work closely with other care providers in the city to ensure a seamless service for people across Leeds.

The services provided by St Gemma's Hospice are completely free of charge to patients, families and carers, but are not free to provide.

The majority of the Hospice's annual running costs must be raised from donations and fundraising initiatives. We simply would not be able to continue caring for people with life threatening illnesses without the valuable and on-going support of the community. We are extremely grateful to all those who make donations, take part in fundraising events, leave a gift in their Will or help the Hospice in any way to continue its caring work.

This is just a brief overview of some of our work this year. We couldn't list everything, but thank you to everyone who has contributed in any way.



“ We could not have coped without St Gemma's support. We're so grateful. ”

For more details about the work of St Gemma's Hospice, or how you can support us, please visit:
www.st-gemma.co.uk or call
0113 218 5555.

📍 St Gemma's Hospice,
329 Harrogate Rd,
Leeds, LS17 6QD

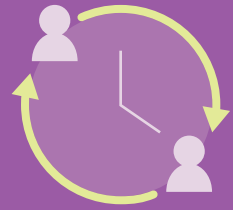
☎ 0113 218 5500

🌐 www.st-gemma.co.uk

Registered Charity 1015941
Company Limited by Guarantee
Registered in England 2773867
Registered Office as opposite



St Gemma's Hospice The Year in Review 2022/23



We cared for
492

patients in the Hospice In-Patient Unit. We were open for admissions **24 hours a day** and most patients **(81%)** were admitted for care within one day of referral



You helped to raise
£15m

so we could continue providing vital services and investing in raising money for the next year

100%

of bereaved families felt that their relative died in the right place



Almost

800

volunteers contributed tens of thousands of hours across key areas including bereavement support, gardening and therapies



1,365

local people were referred to St Gemma's care for the first time



The Year in Numbers

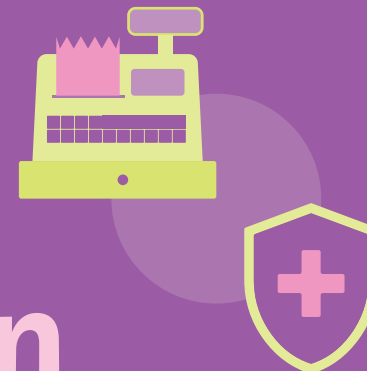
Thanks to you, we were able to provide all of our expert services completely free of charge to patients and their families

663,195

customers visited our chain of shops and bought 1,372,003 items, helping to raise over

£1 million

towards patient care



Our team of specialist community nurses and doctors made

19,842

Contacts with patients

We ranked

31st

in the Inclusive Top 50 UK Employers List, officially recognising our continued commitment to workplace diversity, equality and inclusion



We trained

1,054

professionals and had **128 student** placements, supporting them to deliver the best possible care in the future

We supported adults and children through bereavement, making

2,967

contacts in the year

